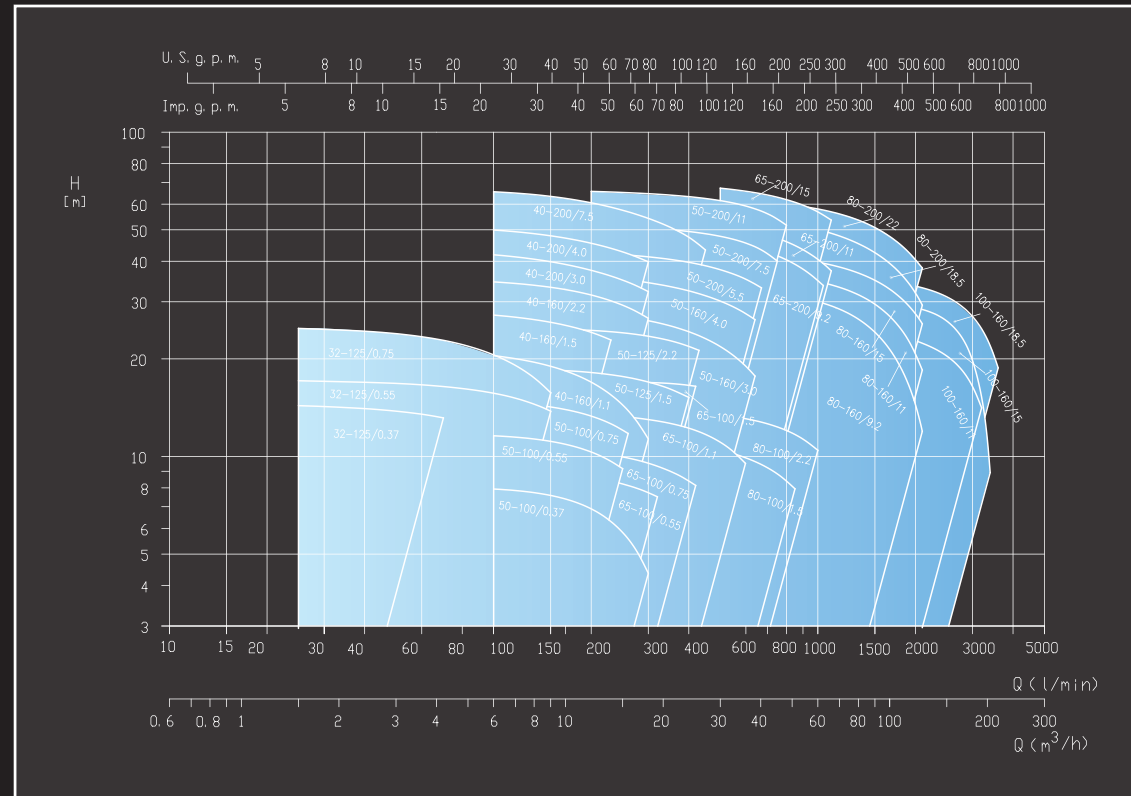


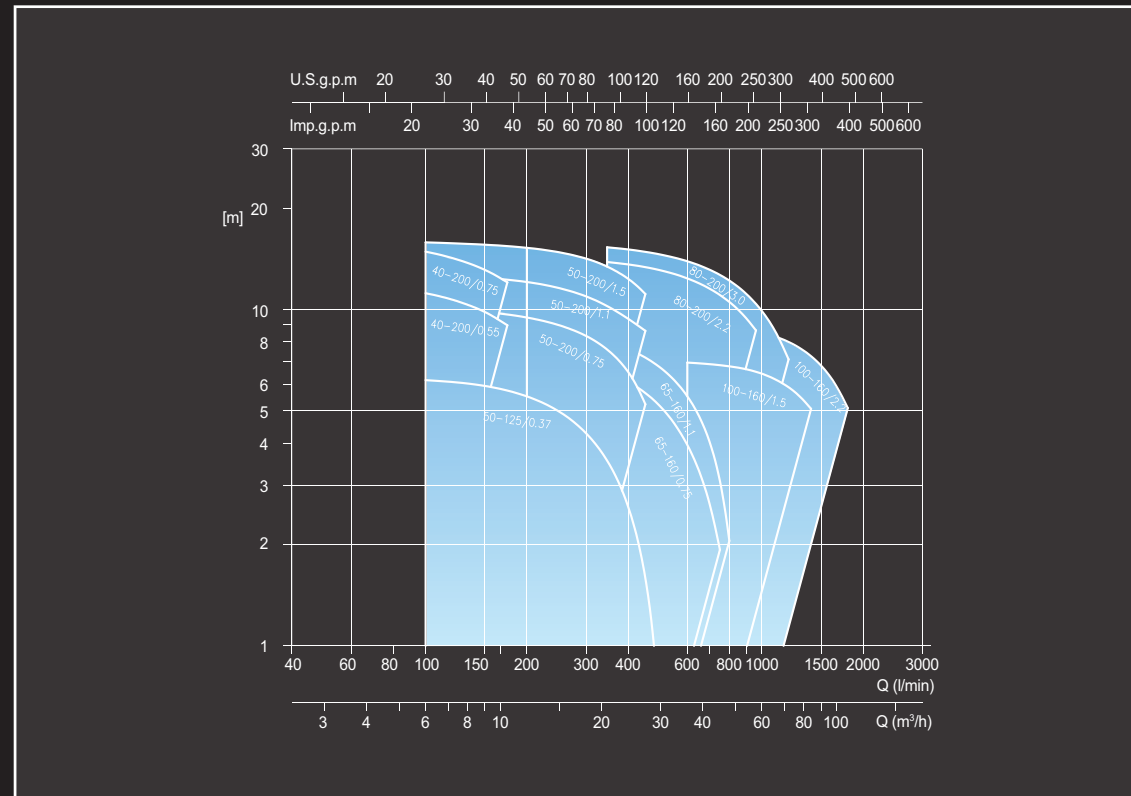
2 poles 50Hz

Performance range



4 poles 50Hz

Performance range



**EBARA Pumps Europe S.p.A.**  
 Via Torri di Confine 2/1 int. C  
 36053 Gambellara (Vicenza), Italy  
 Phone +39 0444 706811  
 Fax +39 0444 405811  
 ebarapumps.epe@ebaracom  
 www.ebaraeurope.com

**EBARA Corporation**  
 11-1, Haneda Asahi-cho, Ota-ku,  
 Tokyo 144-8510  
 Japan  
 Phone +81 3 6275 7598  
 Fax +81 3 5736 3193  
 www.ebara.com



EBARA Pumps Europe S.p.A. reserves the right to make modifications without prior notice: all specifications could be subject to change

479705670A 11/22

Looking ahead,  
 going beyond expectations  
*Ahead Beyond*



3E / 3E-K SERIES

50Hz Product catalog

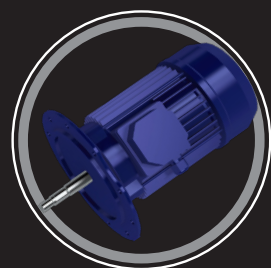


# Moving beyond the pump to exceed customers' expectation

The new EBARA In-line close-coupled centrifugal pump has been designed to **improve performance and energy saving**.

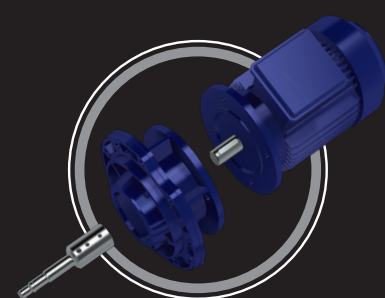
3E SERIES pumps are versatile, silent, characterized by robust design and ease of maintenance, thanks to the back pull-out design that allows downtime reduction. They are equipped with IE2/IE3 motors as standard, IE4 and IE5 premium efficiency motors available as option for the stub shaft version (3ES).

Realized in two structural shapes in order to satisfy the most wide range of exigencies for the industrial applications:



## 3E model

Close-coupled construction with the impeller directly splined to the motor shaft

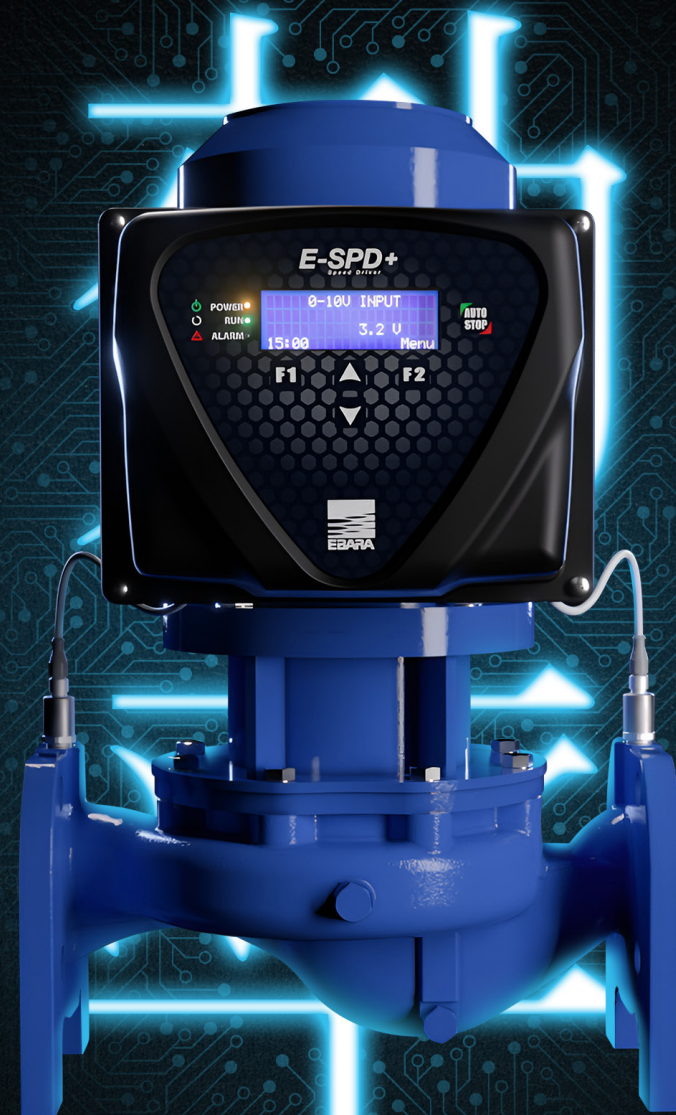


## 3ES model

Close-coupled construction connection of the pump with standard motor with the impeller splined to the motor by a rigid coupling

### Technical data

Flow rate	Up to 216 m <sup>3</sup> /h
Total head	Up to 65,6 m
Max. working pressure	10, 16 bar
Max. temperature of the liquid	-10°C ÷ +120°C
MEI	> 0.4
Poles	2 and 4
Insulation class	F (temperature rise class B)
Protection degree	IP55
Voltage	Three-phase 3~230/400V ±10% (up to 4kW), Three-phase 3~400/690V ±10% (5,5kW and above)



# K-SERIES

## THE KEY TO EFFICIENCY

The 3E-K version is equipped as standard with the new air-cooled E-SPD+ frequency converter, installed on board the terminal box; E-SPD+ is able to adapt the speed continuously to any working point, consequently **optimizing performances and energy consumption** according to the system's requirements.

The 3E-K pumps are available up to 11kW and can be used in handling of liquids in circulation, heating and air conditioning systems in civil and industrial environments.

### Efficient as never before

IE2 and IE3 motors as standard, IE4 and IE5 motors available as option for 3ES models. Moreover, with 3E-K SERIES, thanks to E-SPD+ frequency converter, you can drastically optimize performance and energy consumption to the system requirements; this is what we call *Efficiency*.

### Motor has never been safer

3E SERIES mechanical seal is available in a several combination of materials covering a very large temperature range, to meet your heavy-duty needs. Thanks to AISI 304 (EN 1.4401) stainless steel casing cover as standard for all models, the liquid will never get in contact with the motor.

### Preventing damage of seal

We introduced the rotating "Air-Vent" baffle, a new component patented by EBARA, which improve air ventilation and always keep the seal lubricated

### Reliable over time

Superior hydraulic design impeller available in stainless steel for all models

### Long live the pump

The pump body of 3E SERIES is designed for long-term use thanks to his robust structure and the special treatment (CED coating) of the pump surface which prevent rust and corrosion.

